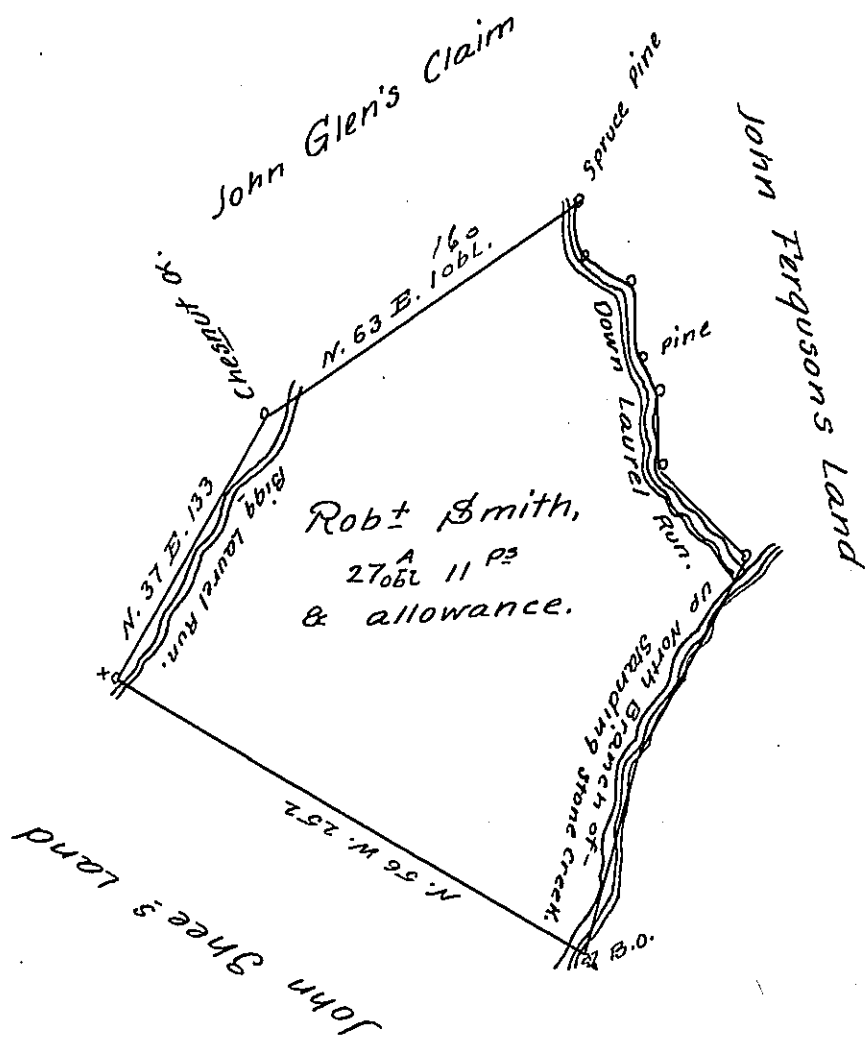


New Huntingdon County



*Courses and Distances  
Down the Little Laurel Run*

- S. 14 W. 24
- S. 57 E. 21
- S. 3 E. 29 Maple
- S. 58 E. 4 Pine
- S. 10 E. 30 Poplar 20
- S. 1 E. 28
- S. 44 E. 52
- S. 30 E. (W) 96
- S. 14 W. 91

A Draught of a Tract of Land situate on the West side of the North Branch of the Stone Creek joining Land of John Shee and others in Bedford County Surveyed the 22<sup>d</sup> day of Sep<sup>r</sup> 1784 in pursuance of a Warrant granted <sup>to</sup> ~~the~~ Rob<sup>t</sup> Smith Dated 24<sup>th</sup> Ap<sup>r</sup> 1775 containing 279 acres <sup>11 P 2</sup> & the usual allowance &c<sup>a</sup>

George Woods D. S.

To John Lukens Esq<sup>r</sup> S. G.

IN TESTIMONY that the above is a copy of the original remaining on file in the Department of Internal Affairs of Pennsylvania, made conformably to an Act of Assembly approved the 16th day of February 1833, I have hereunto set my hand and caused the Seal of said Department to be affixed at Harrisburg, this twentieth day of February 1907

*Hoac B. Brown*  
Secretary of Internal Affairs.